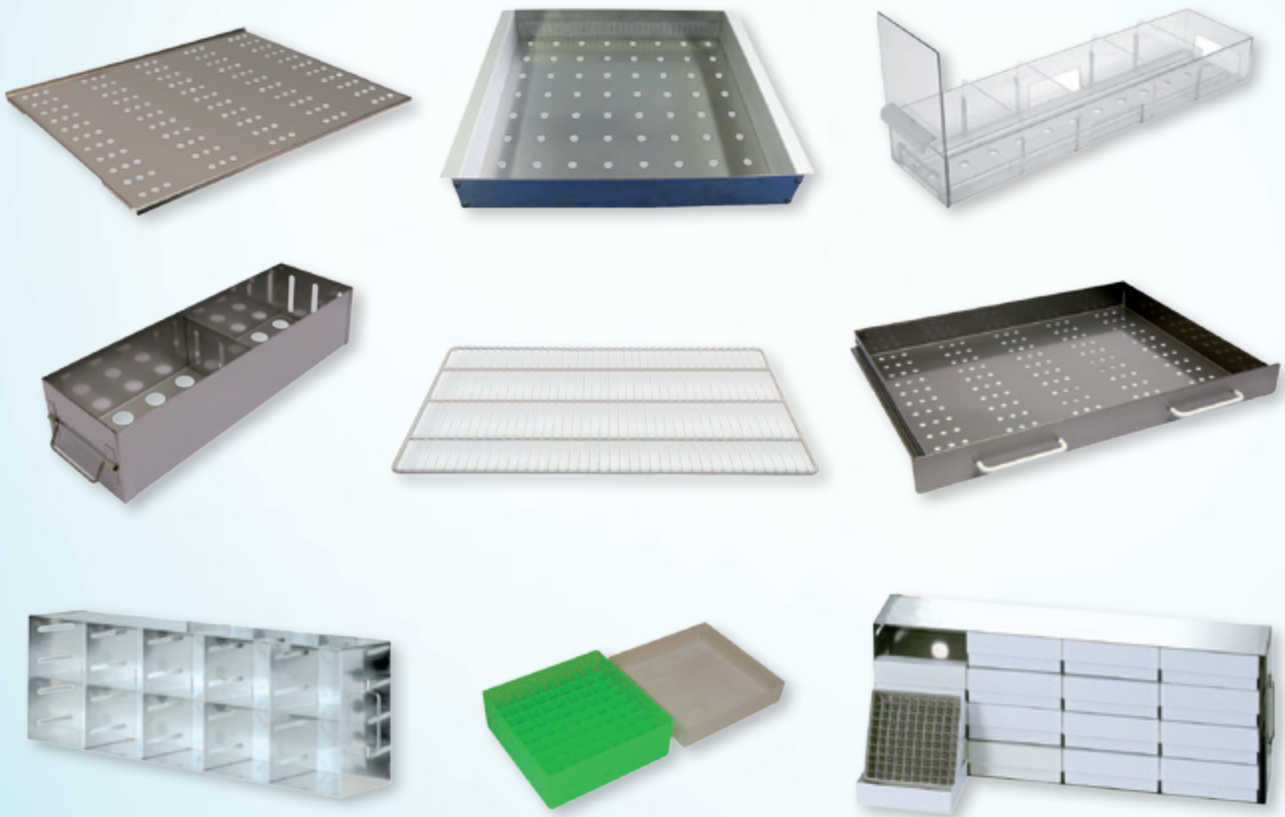


Accessories I Racking & Storage Systems

- > Racks, Shelves and Drawers for B Medical Systems refrigerators and freezers
- > Always well-arranged samples and perfect overview



BIOMEDICAL REFRIGERATION

Innovative and reliable
refrigeration solutions

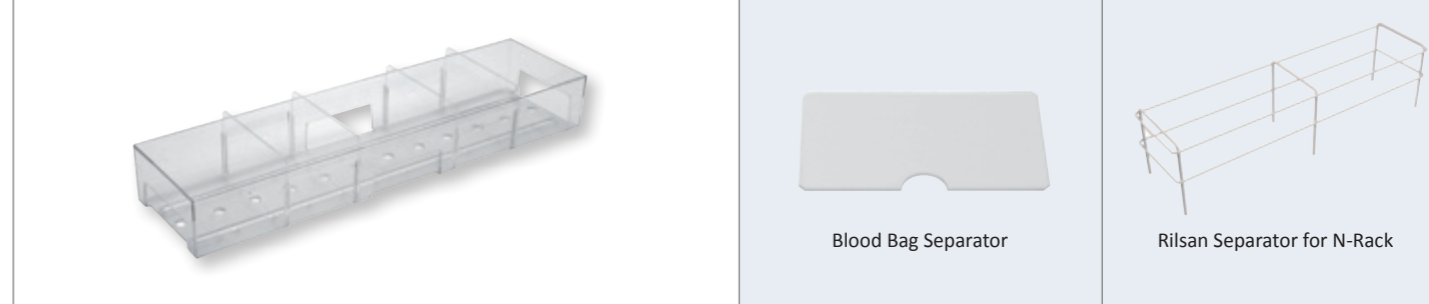
B Medical Systems offers a wide range of racking and storage systems for its «Biomedical Refrigeration» models

In the overview table you can pre-check which accessories are available for your refrigerator or freezer. These accessories are classified in the categories “Racks”, “Shelves” and “Drawers”. On the next pages every accessory is presented individually in order of their appearance in the overview table and with explanation for which refrigerator and freezer models it is applicable. Beside other details you can find information about optional components (e. g. separators, cryoboxes) as well as a reference to other accessories from the programme that are compatible.

	Racks (page 03 - 05)				Shelves (page 06)										Drawers & Touchscreen Display (page 07 - 09)																
	N-Rack 250-490	W-Rack 250-490	W-Rack 750	W-Rack 670-1430	Rack 750	ST-Rack 250-490	ST-Rack 750	Cryo Rack H50/75/100	O-Rack	D-Rack	Wire Shelf 110	Wire Shelf 250-490	Wire Shelf 750	Wire Shelf 135-155	Wire Shelf 355	Wire Shelf 370	Wire Shelf 380	Wire Shelf 670-1430	ST-Shelf 750	ST-Shelf UF	ST-Drawer 135-155	PC-Drawer 355	ST-Drawer 370	ST-Drawer 380	ST-Drawer 110	ST-Drawer 250-490	ST-Drawer 750	ST-Drawer 670-1430	Touchscreen Display		
BR I Blood Bank Refrigerators I +4°C																															
BR 110 GG																															
BR 250 G / GG	■	■										■														■					
BR 410 G / GG	■	■										■														■					
BR 490 G / GG	■	■										■														■					
BR 750 G / GG			■		■																						■			■	
FR-MF / DFR-DMF I Deep Freezers & Plasma Storage Freezers I -41°C / -35°C																															
FR / DFR 110 GG																															
FR / DFR 250 G	■	■				■						■														■				■	
FR / DFR 410 G	■	■				■						■														■				■	
FR / DFR 490 G	■	■				■						■														■				■	
FR / DFR 750 G			■		■		■						■														■			■	
MF / DMF 110 SG																															
MF / DMF 290 SG																															
MF 755 GG							■																								
UF I Ultra Deep Freezers I -86°C																															
UF 455 G / GG							■	■	■	■																					
UF 755 G / GG							■	■	■	■																					
LR-ML I Laboratory / Medicine / Pharmaceutical Refrigerators (solid door) I +4°C / +5°C																															
LR 110 GG																															
LR 250 G / GG	■	■										■															■			■	
LR 410 G / GG	■	■										■															■			■	
LR 490 G / GG	■	■										■															■			■	
LR 750 G / GG			■		■								■														■			■	
ML 135 SG																															
ML 155 SG																															
ML 355 S																															
ML 370 SG																															
ML 380 CSG																															
ML 670 SG																															
ML 1430 SG																															
PR-MP I Laboratory / Medicine / Pharmaceutical Refrigerators (glass door) I +4°C / +5°C																															
PR 110 GG																															
PR 250 G / GG	■	■										■														■				■	
PR 410 G / GG	■	■										■														■				■	
PR 490 G / GG	■	■										■														■				■	
PR 750 G / GG			■		■								■														■			■	
MP 135 SG																															
MP 155 SG																															
MP 355 S																															
MP 370 SG																															
MP 380 CSG																															
MP 670 SG																															
MP 1430 SG																															



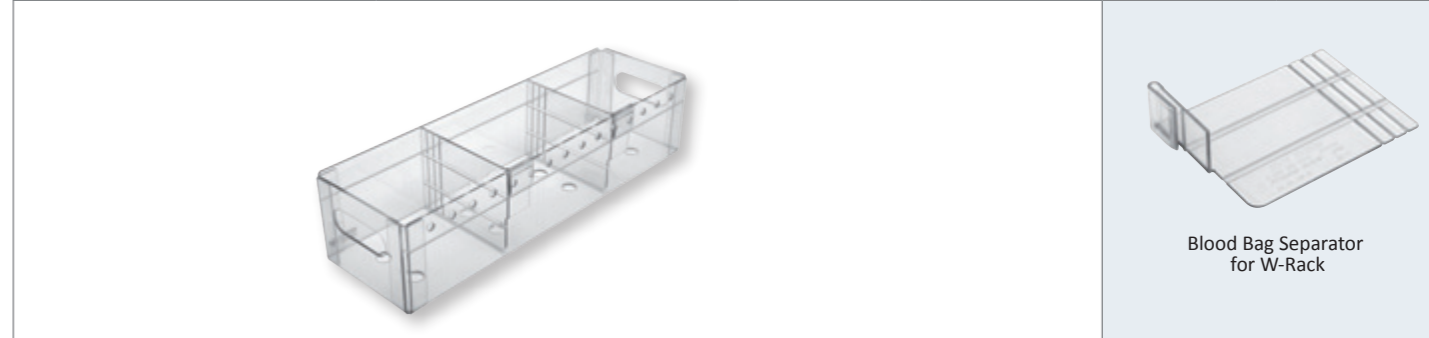
N-Rack 250-490
For Gold models BR / DFR / FR / LR / PR 250 - 490 G / GG for the storage of blood bags and other temperature-sensitive items



Internal equipment for model	BR/DFR/FR/LR/PR 250 G / GG	BR/DFR/FR/LR/PR 410 G / GG	BR/DFR/FR/LR/PR 490 G / GG
Number of items recommended per level	5		
Max. items per unit	10	20	25
Inner Dimension (H x W x D) mm	60 x 112 x 448		
Storage capacity			
Blood bags at 450 ml per N-Rack	12		
Blood bags at 270 ml per N-Rack	16		
Material	Transparent polycarbonate		
Accessories	Blood Bag Separator, Rilsan Separator for N-Rack 250-490, Front Cover for N-Rack 250-490		

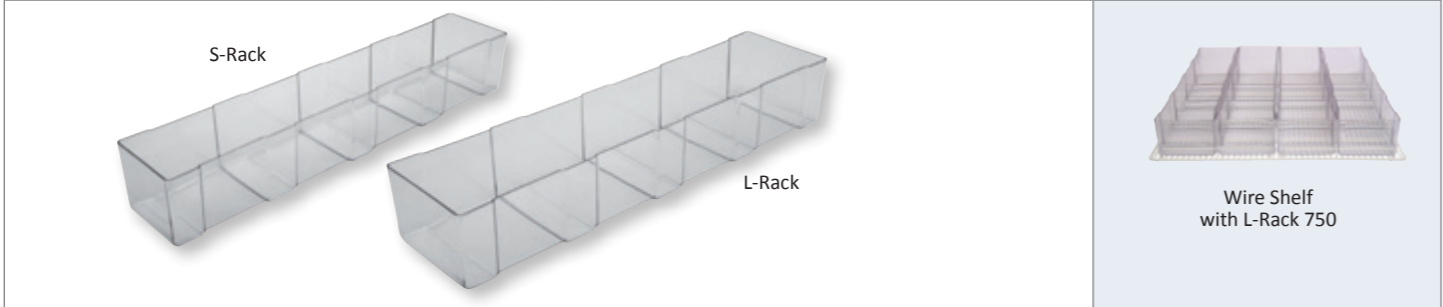


W-Rack 250-490 / 750 / 670-1430 For Gold models BR / DFR / FR / LR / PR 250 - 750 G / GG and for Silver models ML / MP 670 - 1430 SG for the storage of blood bags and other temperature-sensitive items



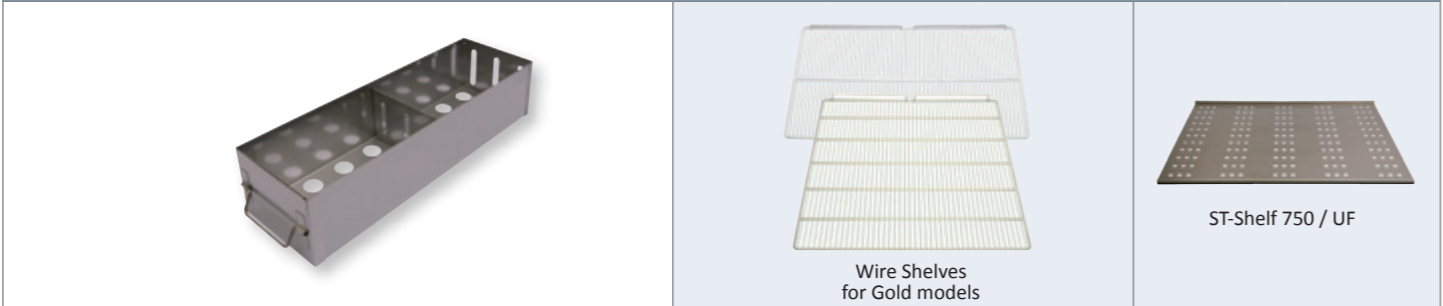
Internal equipment for model	BR/DFR/FR/LR/PR 250 G / GG	BR/DFR/FR/LR/PR 410 G / GG	BR/DFR/FR/LR/PR 490 G / GG	BR/DFR/FR/LR/PR 750 G / GG	ML/MP 670 SG	ML/MP 1430 SG
Number of items recommended per level	4					
Max. items per unit	8	16	20	20	18	36
Inner Dimension (H x W x D) mm	104 x 140 x 450				104 x 155 x 640	
Storage capacity						
Blood bags at 450 ml per W-Rack	12					
Blood bags at 270 ml per W-Rack	16					
Material	Transparent polycarbonate					
Accessories	Blood Bag Separator					

Rack 750
For Gold models BR / DFR / FR / LR / PR 750 G / GG for the storage of blood bags and other temperature-sensitive items



Model Rack 750	S-Rack	L-Rack
Internal equipment for model	BR/DFR/FR/LR/PR 750 G / GG	
Number of items recommended per level	5	4
Max. items per unit	25	20
Inner Dimension (H x W x D) mm	100 x 113 x 638	100 x 145 x 638
Storage capacity		
Blood bags at 450 ml per Rack 750	18	
Blood bags at 270 ml per Rack 750	22	
Material	Transparent polycarbonate	
Accessories	Rilsan Separator	
Also compatible with	ST-Drawer, Wire Shelf	

ST-Rack 250-490 / 750
For Gold models FR / DFR 250 - 750 G, MF 755 GG & UF 455 - 755 G / GG for the storage of plasma bags and other temperature-sensitive items

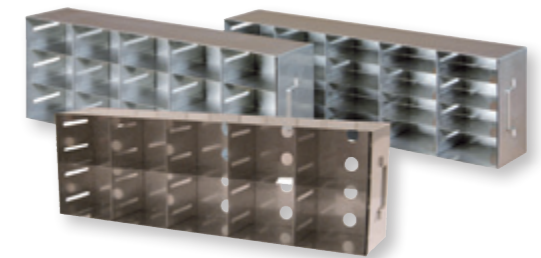


Internal equipment for model	FR/DFR 250 G	FR/DFR 410 G	FR/DFR 490 G	FR/DFR 750 G	MF 755 GG	UF 455 G / GG	UF 755 G / GG
Number of items recommended per level	4				5		
Max. items per unit	8	16	20	25	25	15	25
Inner Dimension (H x W x D) mm	95 x 134 x 453				95 x 134 x 648		
Storage capacity							
Plasma bags at 450 ml per ST-Rack	12				18		
Plasma bags at 270 ml per ST-Rack	16				22		
Material					Stainless steel		
Also compatible with	Wire Shelf				ST-Shelf 750 / UF		

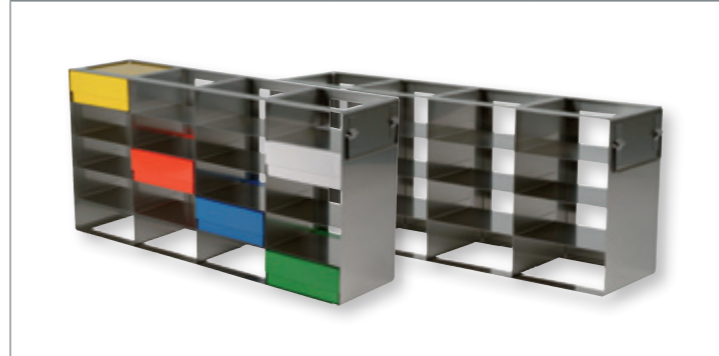


Cryo Rack H50 / H75 / H100
For Gold models UF 455 - 755 G / GG for the storage of Cryoboxes with samples

Model	H50	H75	H100
Internal equipment for model	UF range		
Max. items per unit UF 455 G / GG	15	15	15
Max. items per unit UF 755 G / GG	25	25	25
Inner Dimension (H x W x D) mm	228 x 138 x 697	240 x 138 x 697	228 x 138 x 697
Max. Cryoboxes per Cryo Rack	20	15	10
Material	Stainless steel		
Accessories	Cryobox H50 / H75 / H100, Separator for Cryobox		
Also compatible with	ST-Shelf 750/UF		

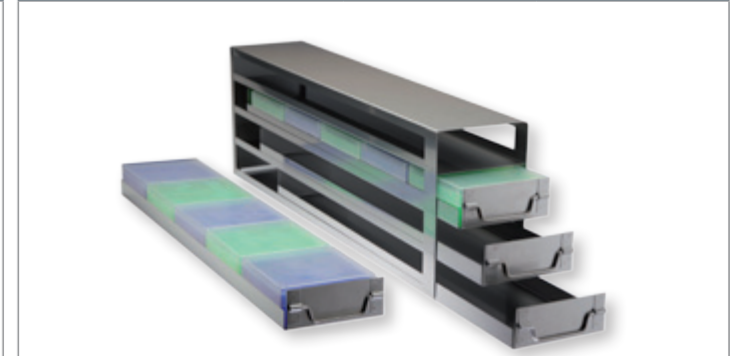


O-Rack H50 / H75 For Gold models UF 455 - 755 G / GG for the storage of Cryoboxes with samples



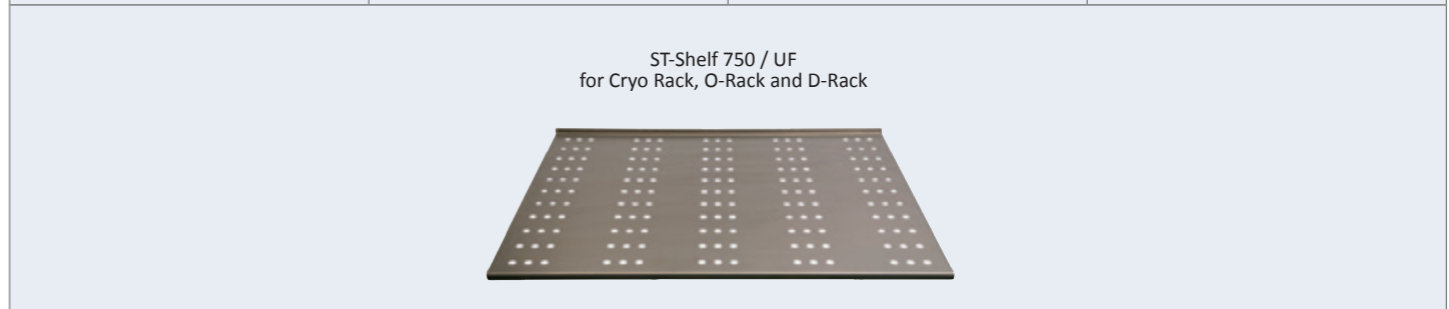
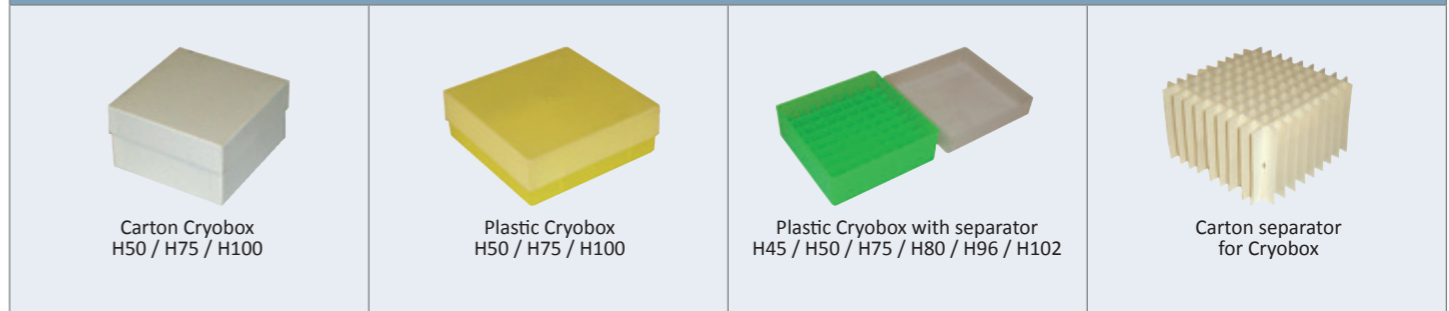
Model	H50	H75
Internal equipment for model	UF range	
Max. items per unit UF 455 G / GG	15	15
Max. items per unit UF 755 G / GG	25	25
Inner Dimension (H x W x D) mm	224 x 139 x 700	244 x 139 x 700
Max. Cryoboxes per O-Rack	20	15
Material	Stainless steel	
Accessories	Cryobox H50 / H75, Separator for Cryobox	
Also compatible with	ST-Shelf 750/UF	

D-Rack H50 / H75 For Gold models UF 455 - 755 G / GG for the storage of Cryoboxes with samples



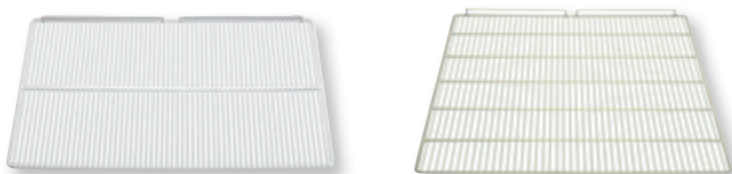
Model	H50	H75
Internal equipment for model	UF range	
Max. items per unit UF 455 G / GG	15	15
Max. items per unit UF 755 G / GG	25	25
Inner Dimension (H x W x D) mm	231 x 140 x 700	249 x 140 x 700
Max. Cryoboxes per D-Rack	20	15
Material	Stainless steel	
Accessories	Cryobox H50 / H75, Separator for Cryobox	
Also compatible with	ST-Shelf 750/UF	

Cryoboxes
For Cryo Rack, O-Rack & D-Rack

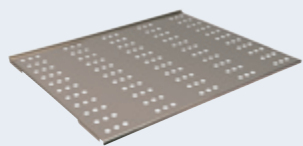


Wire Shelf 110 / 250-490 / 750 (with rails)

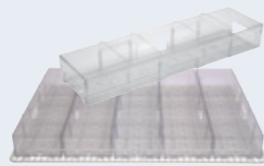
For Gold models BR / DFR / FR / LR / PR 110 - 750 G / GG



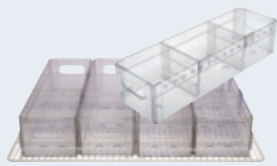
Internal equipment for model	DFR/FR/LR 110 GG	BR/DFR/FR/LR/PR 250 G / GG	BR/DFR/FR/LR/PR 410 G / GG	BR/DFR/FR/LR/PR 490 G / GG	BR/DFR/FR/LR/PR 750 G / GG
Number of items recommended / max.	2 / 3	2 / 4	4 / 8	5 / 10	5 / 10
Inner Dimension (H x W x D) mm	19 x 428 x 370	36 x 626 x 465			36 x 676 x 646
Material	Wire DIN 177, PA11 coated				
Accessories	-	ST-Cover			
Also compatible with	-	N-Rack, W-Rack, S-Rack 750, L-Rack 750			



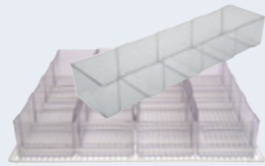
ST-Cover for Wire Shelf GOLD range



Wire Shelf with N-Rack



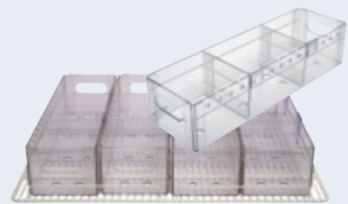
Wire Shelf with W-Rack



Wire Shelf with S-Rack 750, L-Rack 750

Wire Shelf 135-155 / 355 / 370 / 380 / 670-1430 (with rails)

For Silver models ML / MP 135 - 1430 SG

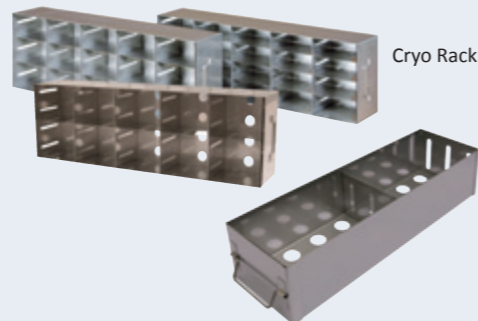


Wire Shelf with W-Rack

Internal equipment for model	ML/MP 135 SG	ML/MP 155 SG	ML/MP 355 S	ML/MP 370 SG	ML/MP 380 CSG	ML/MP 670 SG	ML/MP 1430 SG
Number of items recommended / max.	3 / 3		5 / 8	7 / 14	4 / 6	6 / 12	12 / 24
Inner Dimension (H x W x D) mm	19 x 448x 358		19 x 559 x 358	19 x 492 x 358		19 x 530 x 645	
Material	Wire DIN 177, PA11 coated						
Also compatible with	-					W-Rack	

ST-Shelf 750 / UF

For Gold models FR / DFR 750 G & UF 455 - 755 G / GG

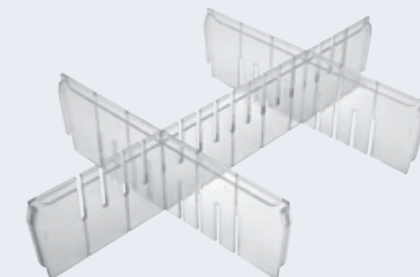


Cryo Rack

Internal equipment for model	FR/DFR 750 G	UF 455 G / GG	UF 755 G / GG
Number of items recommended / max.	5 / 10	2 / 4	4 / 8
Inner Dimension (H x W x D) mm	15 x 700 x 700	15 x 714 x 700	
Material	Stainless steel		
Also compatible with	Cryo Rack, ST-Rack		

PC-Drawer 355 (with rails)

For Silver models ML / MP 355 S

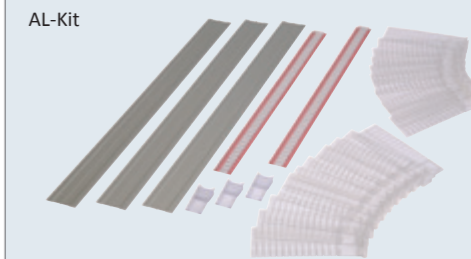
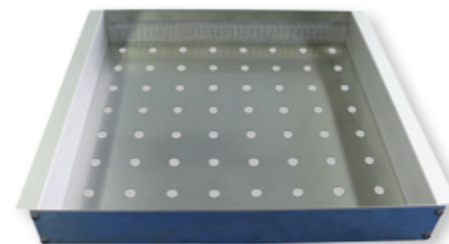


PC-Kit (Polycarbonate)

Internal equipment for model	ML/MP 355 S
Number of items recommended / max.	5 / 8
Inner Dimension (H x W x D) mm	107 x 532 x 332
Material	Transparent polycarbonate
Accessories	PC-Kit

ST-Drawer 135-155 / 355 / 360 / 370 (with telescopic rails)

For Silver models ML / MP 135 - 380 CSG

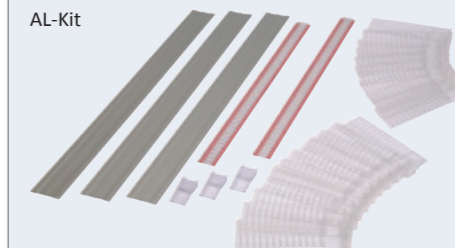
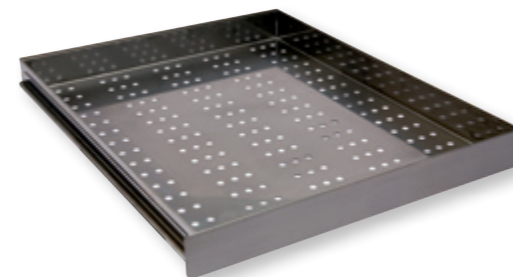


AL-Kit

Internal equipment for model	ML/MP 135 SG	ML/MP 155 SG	ML/MP 370 SG	ML/MP 380 CSG
Number of items recommended / max.	3 / 3		7 / 10	4 / 4
Inner Dimension (H x W x D) mm	56 x 364 x 358		56 x 413 x 358	
Material	Stainless steel			
Accessories	AL-Kit			

ST-Drawer 670-1430 (with rails)

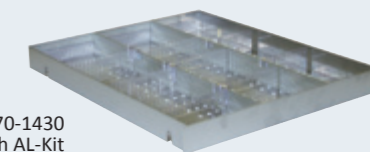
For Silver models ML / MP 670 - 1430 SG



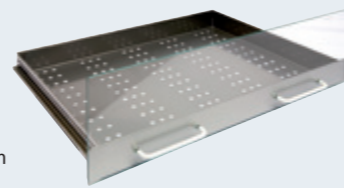
AL-Kit

Internal equipment for model	ML/MP 670 SG	ML/MP 1430 SG
Number of items recommended / max.	6 / 12	12 / 20
Inner Dimension (H x W x D) mm	58 x 494 x 650	
Material	Stainless steel	
Accessories	AL-Kit	

ST-Drawer 670-1430 with AL-Kit



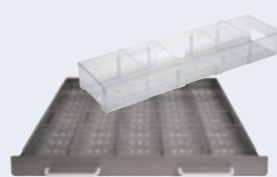
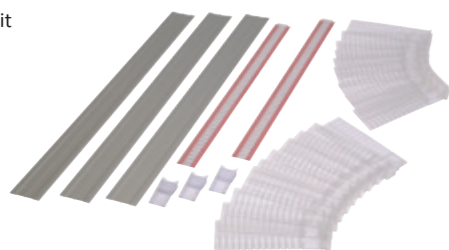
ST-Drawer 110 / 250-490 / 750 (with rails)
For Gold models BR / DFR / FR / LR / PR 110 - 750 G / GG



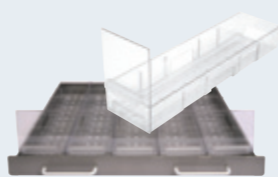
ST-Drawer with Front Cover

Internal equipment for model	BR/PR 110 GG	DFR/FR 110 GG	BR/DFR/FR/LR/PR 250 G / GG	BR/DFR/FR/LR/PR 410 G / GG	BR/DFR/FR/LR/PR 490 G / GG	BR/DFR/FR/LR/PR 750 G / GG
Number of items recommended / max. (without Front Cover)	-	2 / 3	2 / 4	4 / 8	5 / 10	5 / 10
Number of items recommended / max. (with Front Cover)	2 / 2	2 / 3	2 / 2	4 / 4	5 / 5	5 / 5
Inner Dimension (H x W x D) mm (without / with Front Cover)	60 / 190 x 400 x 365		60 / 190 x 590 x 458			58 / 190 x 640 x 647
Material	Stainless steel					
Accessories	Front Cover (glass)					
Also compatible with	AL-Kit, ST-Separator for ST-Drawer		N-Rack, W-Rack, L-Rack 750, S-Rack 750, AL-Kit			

AL-Kit



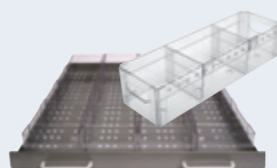
ST-Drawer with N-Rack



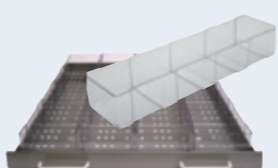
ST-Drawer with N-Rack & Front Cover



ST-Separator for ST-Drawer (Stainless steel)



ST-Drawer with W-Rack



ST-Drawer with S-Rack 750, L-Rack 750



Touchscreen display

> For Gold models BR / DFR / FR / LR / PR 250 – 750 G / GG (except models 110 GG), UF 455 & 755 G / GG and MF 755 GG

The new B Medical Systems Touchscreen display offers a lot of individual configuration possibilities. According to your professional needs, data, events and activities can be displayed and analyzed in detail.



Main features :

- > 7" touchscreen display
- > Clear and user-friendly
- > With temperature graphs (1 year history)
- > Different user profiles (with access to different areas) & Multi-Language user interface
- > Event history (for the 300 last events) keeps track on all events occurred during operations (like door openings, warnings and alarms)
- > All data can be exported to USB storage devices



BR 410 GG with touchscreen display



High temperature alarm

- > The alarm messages are displayed in red characters in the main area, just below the temperature display.
- > The acoustic alarm can be suppressed for a predefined time by pressing the „mute“ button.



Trend display

- > Possibility to display actual and historical temperature values in graphic format, with legend of the charts.
- > Temperature charts can be exported in cvs-format to USB stick.



B Medical Systems

Your global partner to save lives.



COLD CHAIN

Comprehensive range of storage and active / passive transport systems for the storage and distribution of vaccines and in general of all temperature-sensitive preparations under various climatic and technical conditions.



BLOOD CHAIN

Storage and active / passive transport systems dedicated to the military for the supply of blood, vaccines and medicines to the front line.



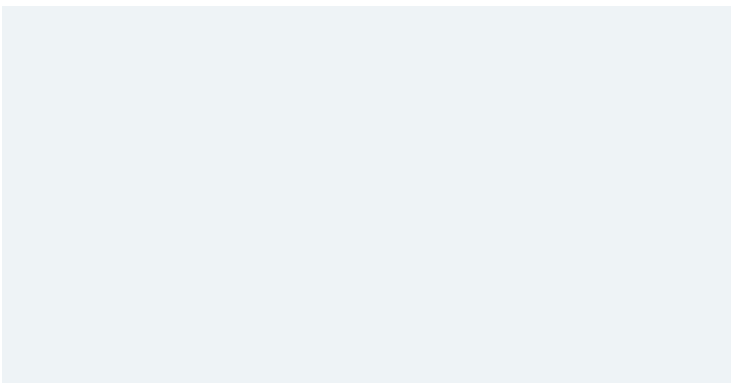
BIOMEDICAL REFRIGERATION

Special purpose refrigerators and deep freezers, storage and transport concepts for Laboratory, Medicine, Research, Biotechnology and Life Sciences.



BLOOD SAFETY

For a reliable cold chain within the scope of safety of blood transfusions.



For more information :

B Medical Systems S.à r.l.

17, Op der Hei

L - 9809 Hosingen, Luxembourg

Tel. : + 352 92 07 31-1

Fax : + 352 92 07 31-300

info@bmedicalsistemas.com

www.bmedicalsistemas.com